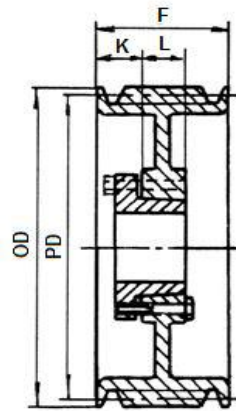
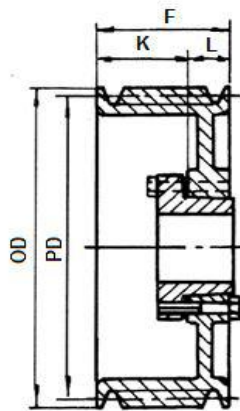


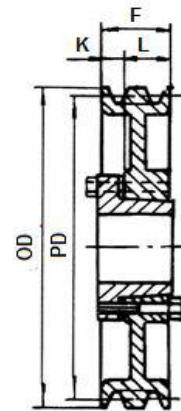
Pulley Designs



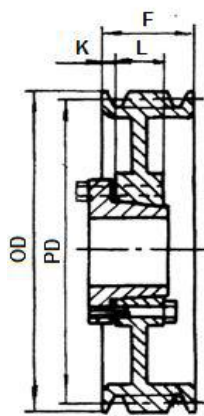
Type A



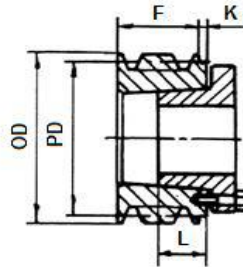
Type B



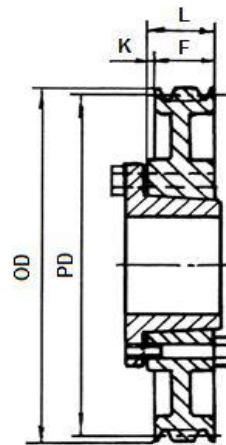
Type C



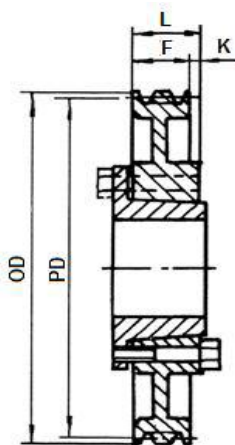
Type D



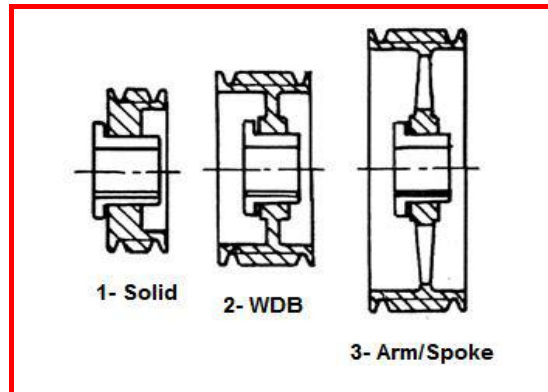
Type E



Type F



Type G



OD	PD	1 Groove F=11/16						2 Groove F=1 3/32				
				F=3/4 -- 3v800 + 3v1600								
				F=13/16 -3v1400 + 3v1900								
		Size	Bush	Type	K	L	Size	Bush	Type	K	L	
2.20	2.15	1 3V 220 JA	JA	E 1	7/16	9/16	2 3V 220 JA	JA	E 1	7/16	9/16	
2.35	2.3	1 3V 235 JA	JA	E 1	7-16	9-16	2 3V 235 JA	JA	E1	7-16	9-16	
2.50	2.45	1 3V 250 JA	JA	E1	7-16	9-16	2 3V 250 JA	JA	E1	7-16	9-16	
2.65	2.6	1 3V 265 JA	JA	C1	1-8	9-16	2 3V 265 JA	JA	D1	1-8	9-16	
2.80	2.75	1 3V 280 JA	JA	C1	1-8	9-16	2 3V 280 JA	JA	D1	1-8	9-16	
3.00	2.95	1 3V 300 JA	JA	C1	1-8	9-16	2 3V 300 JA	JA	D1	1-8	9-16	
3.15	3.1	1 3V 315 JA	JA	C1	1-8	9-16	2 3V 315 JA	JA	D1	1-8	9-16	
3.35	3.3	1 3V 335 JA	JA	C1	1-8	9-16	2 3V 335 JA	SH	D1	9/64	13/16	
3.65	3.6	1 3V 365 SH	SH	G1	1-8	13/16	2 3V 365 SH	SH	D1	9/64	13/16	
4.12	4.07	1 3V 412 SH	SH	G1	1-8	13/16	2 3V 412 SH	SH	D1	9/32	13/16	
4.50	4.45	1 3V 450 SH	SH	G1	1-8	13/16	2 3V 450 SH	SH	D1	9/32	13/16	
4.75	4.7	1 3V 475 SH	SH	G1	1-8	13/16	2 3V 475 SH	SH	D1	9/32	13/16	
5.00	4.9	1 3V 500 SH	SH	G1	1-8	13/16	2 3V 500 SH	SH	D1	9/32	13/16	
5.30	5.25	1 3V 530 SH	SH	G2	1-8	13/16	2 3V 530 SH	SH	D1	9/32	13/16	
5.60	5.55	1 3V 560 SH	SH	G2	1-8	13/16	2 3V 560 SH	SH	D2	9/32	13/16	
6.00	5.95	1 3V 600 SH	SH	G2	1-8	13/16	2 3V 600 SH	SH	D2	9/32	13/16	
6.50	6.45	1 3V 650 SH	SH	G2	1-8	13/16	2 3V 650 SH	SDS	D2	5/16	3-4	
6.90	6.85	1 3V 690 SH	SH	G3	1-8	13/16	2 3V 690 SH	SDS	D2	5/16	3-4	
8.00	7.95	1 3V 800 SDS	SDS	G3	-	3-4	2 3V 800 SDS	SDS	D3	5/16	3-4	
10.60	10.55	1 3V 1060 SDS	SDS	G3	-	3-4	2 3V #### SDS	SK	F3	5/32	1.1/4	
14.00	13.95	1 3V 1400 SK	SK	G3	7-16	1 1/4	2 3V #### SK	SK	F3	5/32	1.1/4	
19.00	18.95	1 3V 1900 SK	SK	G3	7-16	1 1/4	2 3V #### SK	SK	F3	5/32	1.25	

OD	PD	3 Groove F=1 1/2					4 Groove F=1 29/32				
		Size	Bush	Type	K	L	Size	Bush	Type	K	L
2.20	2.45	3 3V 250 JA	JA	E1	7/16	9/16					
2.60	2.60	3 3V 265 JA	JA	D1	1-8	9-16	4 3V 265 JA	JA	D1	-	9-16
2.80	2.75	3 3V 280 JA	JA	D1	1-8	9-16	4 3V 280 JA	JA	D1	-	9-16
3.00	2.95	3 3V 300 SH	SH	E1	-	13/16	4 3V 300 SH	SH	E1	5-16	13/16
3.15	3.10	3 3V 315 SH	SH	E1	-	13/16	4 3V 315 SH	SH	E1	5-16	13/16
3.35	3.30	3 3V 335 SH	SH	D1	1-8	13/16	4 3V 335 SH	SH	D1	1-8	13/16
3.65	3.60	3 3V 365 SH	SH	D1	1-8	13/16	4 3V 365 SH	SH	D1	1-8	13/16
4.12	4.07	3 3V 412 SH	SH	A1	11-16	13/16	4 3V 412 SH	SH	A1	13/16	13/16
4.50	4.45	3 3V 450 SDS	SDS	A1	11-16	3-4	4 3V 450 SDS	SDS	A1	13/16	3-4
4.75	4.70	3 3V 475 SDS	SDS	A1	11-16	3-4	4 3V 475 SDS	SDS	A1	13/16	3-4
5.00	4.95	3 3V 500 SDS	SDS	A1	11-16	3-4	4 3V 500 SDS	SDS	A1	13/16	3-4
5.30	5.25	3 3V 530 SDS	SDS	A1	11-16	3-4	4 3V 530 SDS	SDS	A1	13/16	3-4
5.60	5.55	3 3V 560 SDS	SDS	A1	11-16	3-4	4 3V 560 SDS	SDS	A1	13/16	3-4
6.00	5.95	3 3V 600 SDS	SDS	A2	11-16	3-4	4 3V 600 SK	SK	D1	5-8	1.1/4
6.50	6.45	3 3V 650 SDS	SDS	A2	11-16	3-4	4 3V 650 SK	SK	D2	5-8	1.1/4
6.90	6.85	3 3V 690 SDS	SDS	A2	11-16	3-4	4 3V 690 SK	SK	D2	5-8	1.1/4
8.00	7.95	3 3V 800 SK	SK	C3	1-4	1.1/4	4 3V 800 SK	SK	D3	5-8	1.1/4
10.60	10.55	3 3V 1060 SK	SK	C3	1-4	1.1/4	4 3V #### SK	SK	D3	5-8	1.1/4
14.00	13.95	3 3V 1400 SK	SK	C3	1-4	1.1/4	4 3V #### SK	SK	D3	5-8	1.1/4
19.00	18.95	3 3V 1900 SF	SF	C3	1-4	1.1/4	4 3V #### SF	SF	C3	21/32	1.1/4
25.00	24.95	3 3V 2500 SF	SF	C3	1-4	1.1/4	4 3V #### SF	SF	C3	21/32	1.1/4
33.50	33.45	3 3V 3350 SF	SF	C3	1-4	1.1/4	4 3V #### E	E	C3	9-1	15/8

OD	PD	5 Groove F=2 5/16						6 Groove F=2 23/32				
		Size	Bush	Type	K	L	Size	Bush	Type	K	L	
4.75	4.7	5 3V 475 SDS	SDS	A1	13/16	3/4	6 3V 475 SK	SK	D1	-	1.1/4	
5.00	4.95	5 3V 500 SDS	SDS	A1	13/16	3/4	6 3V 500 SK	SK	D1	-	1.1/4	
5.30	5.25	5 3V 530 SK	SK	A1	15/16	1.1/4	6 3V 530 SK	SK	A1	1 5/16	1.1/4	
5.60	5.55	5 3V 560 SK	SK	A1	15/16	1.1/4	6 3V 560 SK	SK	A1	1 5/16	1.1/4	
6.00	5.95	5 3V 600 SK	SK	A1	15/16	1.1/4	6 3V 600 SK	SK	A1	1 5/16	1.1/4	
6.50	6.45	5 3V 650 SK	SK	A1	15/16	1.1/4	6 3V 650 SK	SK	A1	1 5/16	1.1/4	
6.90	6.85	5 3V 690 SK	SK	A2	15/16	1.1/4	6 3V 690 SK	SK	A2	1 5/16	1.1/4	
8.00	7.95	5 3V 800 SK	SK	A2	15/16	1.1/4	6 3V 800 SK	SK	A2	1 5/16	1.1/4	
10.60	10.55	5 3V 1060 SK	SK	A3	15/16	1.1/4	6 3V #### SF	SF	A2	7/8	1.1/4	
14.00	13.95	5 3V 1400 SF	SF	A3	7-8	1.1/4	6 3V #### SF	SF	A3	7/8	1.1/4	
19.00	18.95	5 3V 1900 SF	SF	A3	7-8	1.1/4	6 3V #### E	E	B3	1 3/32	1.5/8	
25.00	24.95	5 3V 2500 E	E	C3	11-16	1.5/8	6 3V #### E	E	B3	1 3/32	1.5/8	
33.50	33.45	5 3V 3350 E	E	C3	11-16	1.5/8	6 3V #### E	E	B3	1 3/32	1.5/8	

3V QD Pulley

OD	PD	8 Groove F=3 17/32						10 Groove F=4 11/32				
		Size	Bush	Type	K	L	Size	Bush	Type	K	L	
4.75	4.70	8 3V 475 SK	SK	D1	-	1.1/4	4 3V 475 SDS	SDS	D1	-	3-4	
5.00	4.95	8 3V 500 SK	SK	D1	-	1.1/4	4 3V 500 SDS	SDS	D1	-	3-4	
5.30	5.25	8 3V 530 SK	SK	A1	1.5/16	1.1/4	4 3V 530 SDS	SDS	A1	1.7/16	3-4	
5.60	5.55	8 3V 560 SK	SK	A1	1.5/16	1.1/4	4 3V 560 SDS	SDS	A1	1.7/16	3-4	
6.00	5.95	8 3V 600 SK	SK	A1	1.5/16	1.1/4	4 3V 600 SK	SK	A1	1.7/16	1.1/4	
6.50	6.45	8 3V 650 SK	SK	A1	1.5/16	1.1/4	4 3V 650 SK	SK	A1	1.7/16	1.1/4	
6.90	6.85	8 3V 690 SK	SK	A2	1.5/16	1.1/4	4 3V 690 SK	SK	A2	1.7/16	1.1/4	
8.00	7.95	8 3V 800 SK	SK	A2	1.1/8	1.1/4	4 3V 800 SK	SK	A2	1.1/2	1.1/4	
10.60	10.55	8 3V 1060 SF	SF	A3	1.1/8	1.1/4	4 3V #### SK	SK	A3	1.1/4	1.1/4	
14.00	13.95	8 3V 1400 E	E	A3	1.1/4	1.1/4	4 3V #### SK	SK	A3	1.1/4	1.1/4	
19.00	18.95	8 3V 1900 E	E	A3	1.1/4	1.5/8	4 3V #### SF	SF	A3	1.1/4	1.1/4	
25.00	24.95	8 3V 2500 E	E	A3	1.1/4	1.5/8	4 3V #### SF	SF	A3	1.5/16	1.1/4	
33.50	33.45	8 3V 3350 F	F	B3	1.1/32	2.1/2	4 3V #### E	E	A3	1.5/16	1.5/8	

OD	PD	2 Groove F=1 11/16						3 Groove F=1 3/32				
		Size	Bush	Type	K	L	Size	Bush	Type	K	L	
4.40	4.30	2 5V 440 SH	SH	E 1	7/8	13/16	3 5V 440 SDS	SDS	E 1	-	3-4	
4.65	4.55	2 5V 465 SDS	SDS	E 1	-	3-4	3 5V 465 SDS	SDS	E 1	-	3-4	
4.90	4.80	2 5V 490 SDS	SDS	E 1	11-16	3-4	3 5V 490 SDS	SDS	A 1	1.1/16	3-4	
5.20	5.10	2 5V 520 SDS	SDS	C 1	11-16	3-4	3 5V 520 SDS	SDS	A 1	1.1/16	3-4	
5.50	5.40	2 5V 550 SDS	SDS	C 1	11-16	3-4	3 5V 550 SDS	SDS	A 1	1.1/16	3-4	
5.90	5.80	2 5V 590 SDS	SDS	C 1	11-16	3-4	3 5V 590 SDS	SDS	A 1	1.1/16	3-4	
6.30	6.20	2 5V 630 SK	SK	C 1	7-16	1.1/4	3 5V 630 SK	SK	A 1	1.1/16	1.1/4	
6.70	6.60	2 5V 670 SK	SK	C 1	7-16	1.1/4	3 5V 670 SK	SK	A 1	1.1/16	1.1/4	
7.10	7.00	2 5V 710 SK	SK	G 1	7-16	1.1/4	3 5V 710 SF	SF	A 1	1.1/8	1.1/4	
7.50	7.40	2 5V 750 SK	SK	G 1	7-16	1.1/4	3 5V 750 SF	SF	A 1	1.1/8	1.1/4	
8.00	7.90	2 5V 800 SK	SK	G 1	7-16	1.1/4	3 5V 800 SF	SF	A 1	1.1/8	1.1/4	
8.50	8.40	2 5V 850 SK	SK	G 1	7-16	1.1/4	3 5V 850 SF	SF	A 2	1.1/8	1.1/4	
9.00	8.90	2 5V 900 SK	SK	G 1	7-16	1.1/4	3 5V 900 SF	SF	A 2	1.1/8	1.1/4	
9.25	9.15	2 5V 925 SK	SK	G 2	7-16	1.1/4	3 5V 925 SF	SF	A 2	1.1/8	1.1/4	
9.75	9.65	2 5V 975 SK	SK	G 2	7-16	1.1/4	3 5V 975 SF	SF	A 2	1.1/8	1.1/4	
10.30	10.20	2 5V 1030 SK	SK	G 2	7-16	1.1/4	3 5V #### SF	SF	A 2	1.1/8	1.1/4	
10.90	10.80	2 5V 1090 SK	SK	G 2	7-16	1.1/4	3 5V #### SF	SF	A 2	1.1/8	1.1/4	
11.30	11.20	2 5V 1130 SK	SK	G 3	7-16	1.1/4	3 5V #### SF	SF	A 3	1.1/8	1.1/4	
11.80	11.70	2 5V 1180 SK	SK	G 3	7-16	1.1/4	3 5V #### SF	SF	A 3	1.1/8	1.1/4	
12.50	12.40	2 5V 1250 SF	SF	G 3	7-16	1.1/4	3 5V #### E	E	C 3	3-4	1.5/8	
13.20	13.10	2 5V 1320 SF	SF	G 3	7-16	1.1/4	3 5V #### E	E	C 3	3-4	1.5/8	
14.00	13.90	2 5V 1400 SF	SF	D 1	7-16	1.1/4	3 5V #### E	E	C 3	3-4	1.5/8	
15.00	14.90	2 5V 1500 SF	SF	D 1	7-16	1.1/4	3 5V #### E	E	C 3	3-4	1.5/8	
16.00	15.90	2 5V 1600 SF	SF	A 1	7-16	1.1/4	3 5V #### E	E	C 3	3-4	1.5/8	
18.70	18.60	2 5V 1870 SF	SF	A 1	7-16	1.1/4	3 5V #### E	E	C 3	3-4	1.5/8	
21.20	21.10	2 5V 2120 SF	SF	A 1	7-16	1.1/4	3 5V #### E	E	C 3	3-4	1.5/8	
23.60	23.50	2 5V 2360 E	E	A 1	1-16	1.5/8	3 5V #### E	E	C 3	3-4	1.5/8	
28.00	27.90	2 5V 2800 E	E	A 1	1-16	1.5/8	3 5V #### E	E	C 3	3-4	1.5/8	
31.50	31.40						3 5V #### F	F	F 3	1-8	2.1/2	
37.50	37.40						3 5V #### F	F	F 3	1-8	2.1/2	

5V QD Pulley

OD	PD	4 Groove F=3 1/16					5 Groove F=3 3/4				
		Size	Bush	Type	K	L	Size	Bush	Type	K	L
4.40	4.30	4 5V 440 SD	SD	E 1	-	1.1/4	5 5V 440 SD	SD	E 1	-	1.1/4
4.65	4.55	4 5V 465 SD	SD	E 1	-	1.1/4	5 5V 465 SD	SD	E 1	-	1.1/4
4.90	4.80	4 5V 490 SD	SD	A1	1.5/16	1.1/4	5 5V 490 SD	SD	A1	1.5/16	1.1/4
5.20	5.10	4 5V 520 SD	SD	A1	1.5/16	1.1/4	5 5V 520 SD	SD	A1	1.5/16	1.1/4
5.50	5.40	4 5V 550 SD	SD	A1	1.5/16	1.1/4	5 5V 550 SD	SD	A1	1.5/16	1.1/4
5.90	5.80	4 5V 590 SD	SD	A1	1.5/16	1.1/4	5 5V 590 SK	SK	A1	1.5/16	1.1/4
6.30	6.20	4 5V 630 SK	SK	A1	1.5/16	1.1/4	5 5V 630 SK	SK	A1	1.5/16	1.1/4
6.70	6.60	4 5V 670 SK	SK	A1	1.5/16	1.1/4	5 5V 670 SF	SF	A1	1.3/8	1.1/4
7.10	7.00	4 5V 710 SF	SF	A1	1.1/16	1.1/4	5 5V 710 SF	SF	A1	1.3/8	1.1/4
7.50	7.40	4 5V 750 E	E	A1	1.1/16	1.1/4	5 5V 750 SF	SF	A1	1.3/8	1.1/4
8.00	7.90	4 5V 800 E	E	B1	1.7/16	1.5/8	5 5V 800 E	E	A1	1.3/4	1.5/8
8.50	8.40	4 5V 850 E	E	B1	1.7/16	1.1/4	5 5V 850 E	E	A1	1.3/4	1.1/4
9.00	8.90	4 5V 900 E	E	B1	1.7/16	1.5/8	5 5V 900 E	E	A1	1.3/4	1.5/8
9.25	9.15	4 5V 925 E	E	B1	1.7/16	1.5/8	5 5V 925 E	E	A1	1.3/4	1.5/8
9.75	9.65	4 5V 975 E	E	B2	1.7/16	1.5/8	5 5V 975 E	E	A2	1.3/4	1.5/8
10.30	10.20	4 5V 1030 E	E	B2	1.7/16	1.5/8	5 5V 1030 E	E	A2	1.3/4	1.5/8
10.90	10.80	4 5V 1090 E	E	B2	1.7/16	1.5/8	5 5V 1090 E	E	A2	1.3/4	1.5/8
11.30	11.20	4 5V 1130 E	E	B2	1.7/16	1.5/8	5 5V 1130 E	E	A2	1.3/4	1.5/8
11.80	11.70	4 5V 1180 E	E	B2	1.7/16	1.5/8	5 5V 1180 E	E	A2	1.3/4	1.5/8
12.50	12.40	4 5V 1250 E	E	B3	1.7/16	1.5/8	5 5V 1250 E	E	A3	1.3/4	1.5/8
13.20	13.10	4 5V 1320 E	E	B3	1.7/16	1.5/8	5 5V 1320 E	E	A3	1.3/4	1.5/8
14.00	13.90	4 5V 1400 E	E	B3	1.7/16	1.5/8	5 5V 1400 E	E	A3	1.3/4	1.5/8
15.00	14.90	4 5V 1500 E	E	B3	1.7/16	1.5/8	5 5V 1500 E	E	A3	1.3/4	1.5/8
16.00	15.90	4 5V 1600 E	E	B3	1.7/16	1.5/8	5 5V 1600 E	E	A3	1.3/4	1.5/8
18.70	18.60	4 5V 1870 E	E	A3	1.1/4	1.5/8	5 5V 1870 F	F	B3	1.1/4	2.1/2
21.20	21.10	4 5V 2120 E	E	A3	1.1/4	1.5/8	5 5V 2120 F	F	B3	1.1/4	2.1/2
23.60	23.50	4 5V 2360 F	F	C3	7-8	2.1/2	5 5V 2360 F	F	B3	1.1/4	2.1/2
28.00	27.90	4 5V 2800 F	F	C3	7-8	2.1/2	5 5V 2800 F	F	B3	1.1/4	2.1/2
31.50	31.40	4 5V 3150 F	F	C3	7-8	2.1/2	5 5V 3150 J	J	C3	9-16	3.3/16
37.50	37.40	4 5V 3750 F	F	C3	7-8	2.1/2	5 5V 3750 J	J	C3	9-16	3.3/16

5V OD Pulley

OD	PD	6 Groove F=4 7/16					8 Groove F=5 13/16				
		Size	Bush	Type	K	L	Size	Bush	Type	K	L
4.40	4.30	6 5V 440 SD	SD	E 1	-	1.1/4					
4.65	4.55	6 5V 465 SD	SD	E 1	-	1.1/4					
4.90	4.80	6 5V 490 SD	SD	A1	1.5/16	1.1/4					
5.20	5.10	6 5V 520 SD	SD	A1	1.5/16	1.1/4					
5.50	5.40	6 5V 550 SD	SD	A1	1.5/16	1.1/4					
5.90	5.80	6 5V 590 SD	SD	A1	1.5/16	1.1/4					
6.30	6.20	6 5V 630 SK	SK	A1	1.5/16	1.1/4					
6.70	6.60	6 5V 670 SK	SK	A1	1.5/8	1.1/4					
7.10	7.00	6 5V 710 SF	SF	A1	1.5/8	1.1/4	8 5V 710 SF	SF	A1	2.1/8	1.1/4
7.50	7.40	6 5V 750 SF	SF	A1	1.5/8	1.1/4	8 5V 750 SF	SF	A1	2.1/8	1.1/4
8.00	7.90	6 5V 800 E	E	A1	1-2	1.5/8	8 5V 800 E	E	A1	2.1/2	1.5/8
8.50	8.40	6 5V 850 E	E	A1	1-2	1.5/8	8 5V 850 E	E	A1	2.1/2	1.5/8
9.00	8.90	6 5V 900 E	E	A1	1-2	1.5/8	8 5V 900 E	E	A1	2.1/2	1.5/8
9.25	9.15	6 5V 925 E	E	A1	1-2	1.5/8	8 5V 925 F	F	A1	2.9/16	2.1/2
9.75	9.65	6 5V 975 E	E	A1	1-2	1.5/8	8 5V 975 F	F	A1	2.9/16	2.1/2
10.30	10.20	6 5V 1030 E	E	A2	1-2	1.5/8	8 5V 1030 F	F	A1	2.9/16	2.1/2
10.90	10.80	6 5V 1090 E	E	A2	1-2	1.5/8	8 5V 1090 F	F	A2	2.9/16	2.1/2
11.30	11.20	6 5V 1130 E	E	A2	1-2	1.5/8	8 5V 1130 F	F	A2	2.9/16	2.1/2
11.80	11.70	6 5V 1180 E	E	A2	1-2	1.5/8	8 5V 1180 F	F	A2	2.9/16	2.1/2
12.50	12.40	6 5V 1250 F	F	B3	15/16	2.1/2	8 5V 1250 F	F	A2	2.9/16	2.1/2
13.20	13.10	6 5V 1320 F	F	B3	15/16	2.1/2	8 5V 1320 F	F	A3	2.9/16	2.1/2
14.00	13.90	6 5V 1400 F	F	B3	15/16	2.1/2	8 5V 1400 F	F	A3	2.9/16	2.1/2
15.00	14.90	6 5V 1500 F	F	B3	15/16	2.1/2	8 5V 1500 F	F	A3	2.9/16	2.1/2
16.00	15.90	6 5V 1600 F	F	B3	15/16	2.1/2	8 5V 1600 F	F	A3	2.9/16	2.1/2
18.70	18.60	6 5V 1870 F	F	A3	1.5/16	2.1/2	8 5V 1870 J	J	A3	1.9/16	3.3/16
21.20	21.10	6 5V 2120 F	F	A3	1.5/16	2.1/2	8 5V 2120 J	J	A3	1.9/16	3.3/16
23.60	23.50	6 5V 2360 J	J	B3	1.1/4	3.3/16	8 5V 2360 J	J	A3	1.9/16	3.3/16
28.00	27.90	6 5V 2800 J	J	B3	1.1/4	3.3/16	8 5V 2800 J	J	A3	1.9/16	3.3/16
31.50	31.40	6 5V 3150 J	J	B3	1.1/4	3.3/16	8 5V 3150 M	M	B3	5-8	5.3/16
37.50	37.40	6 5V 3750 J	J	B3	1.1/4	3.3/16	8 5V 3750 M	M	B3	5-8	5.3/16

5V OD Pulley



OD	PD	4 Groove F=4 7/8					5 Groove F=6				
		Size	Bush	Type	K	L	Size	Bush	Type	K	L
12.50	12.30	4 8V 1250 F	F	A1	1.3/16	2.1/2	5 8V 1250 F	F	A1	2.5/16	2.1/2
13.20	13.00	4 8V 1320 F	F	A2	1.3/16	2.1/2	5 8V 1320 F	F	A2	2.5/16	2.1/2
14.00	13.80	4 8V 1400 F	F	A2	1.3/16	2.1/2	5 8V 1400 F	F	A2	2.5/16	2.1/2
15.00	14.80	4 8V 1500 F	F	A2	1.3/16	2.1/2	5 8V 1500 F	F	A2	2.5/16	2.1/2
16.00	15.80	4 8V 1600 F	F	A2	1.3/16	2.1/2	5 8V 1600 F	F	A2	2.5/16	2.1/2
17.00	16.80	4 8V 1700 F	F	A3	1.3/16	2.1/2	5 8V 1700 J	J	A3	2	3.3/16
18.00	17.80	4 8V 1800 F	F	A3	1.3/16	2.1/2	5 8V 1800 J	J	A3	2	3.3/16
19.00	18.80	4 8V 1900 F	F	A3	1.3/16	2.1/2	5 8V 1900 J	J	A3	2	3.3/16
20.00	19.80	4 8V 2000 J	J	A3	1.7/16	3.3/16	5 8V 2000 J	J	A3	2	3.3/16
21.20	21.00	4 8V 2120 J	J	A3	1.7/16	3.3/16	5 8V 2120 J	J	A3	2	3.3/16
22.40	22.20	4 8V 2240 J	J	A3	1.7/16	3.3/16	5 8V 2240 M	M	B3	13/16	5.3/16
24.80	24.60	4 8V 2480 M	M	F3	5-16	5.3/16	5 8V 2480 M	M	B3	13/16	5.3/16
30.00	29.80	4 8V 3000 M	M	F3	5-16	5.3/16	5 8V 3000 M	M	B3	13/16	5.3/16
35.50	35.30	4 8V 3550 M	M	F3	5-16	5.3/16	5 8V 3550 M	M	B3	13/16	5.3/16
40.00	39.80	4 8V 4000 M	M	F3	5-16	5.3/16	5 8V 4000 M	M	B3	13/16	5.3/16

OD	PD	6 Groove F=7 1/8					8 Groove F=9 3/8				
		Size	Bush	Type	K	L	Size	Bush	Type	K	L
12.50	12.30	6 8V 1250 F	F	A1	2.5/16	2.1/2	8 8V 1250 J	J	A1	3.9/16	3.3/16
13.20	13.00	6 8V 1320 F	F	A1	2.5/16	2.1/2	8 8V 1320 J	J	A1	3.9/16	3.3/16
14.00	13.80	6 8V 1400 F	F	A1	2.5/16	2.1/2	8 8V 1400 J	J	A1	3.9/16	3.3/16
15.00	14.80	6 8V 1500 F	F	A1	2.9/16	3.3/16	8 8V 1500 J	J	A1	3.9/16	3.3/16
16.00	15.80	6 8V 1600 F	F	A1	2.9/16	3.3/16	8 8V 1600 J	J	A1	3.9/16	3.3/16
17.00	16.80	6 8V 1700 F	F	A2	2.9/16	3.3/16	8 8V 1700 M	M	A2	3.15/16	5.3/16
18.00	17.80	6 8V 1800 F	F	A2	2.9/16	3.3/16	8 8V 1800 M	M	A2	3.15/16	5.3/16
19.00	18.80	6 8V 1900 F	F	A2	2.9/16	3.3/16	8 8V 1900 M	M	A2	3.15/16	5.3/16
20.00	19.80	6 8V 2000 J	J	B2	15/16	5.3/16	8 8V 2000 M	M	A2	3.15/16	5.3/16
21.20	21.00	6 8V 2120 J	J	B2	15/16	5.3/16	8 8V 2120 M	M	A2	3.15/16	5.3/16
22.40	22.20	6 8V 2240 J	J	B3	15/16	5.3/16	8 8V 2240 M	M	A3	3.15/16	5.3/16
24.80	24.60	6 8V 2480 M	M	B3	1.15/16	5.3/16	8 8V 2480 N	N	A3	2.1/4	6.1/4
30.00	29.80	6 8V 3000 M	M	B3	1.15/16	5.3/16	8 8V 3000 N	N	A3	2.1/4	6.1/4
35.50	35.30	6 8V 3550 M	M	C3	1.1/8	6.1/4	8 8V 3550 N	N	A3	2.1/4	6.1/4
40.00	39.80	6 8V 4000 M	M	C3	1.1/8	6.1/4	8 8V 4000 N	N	A3	2.1/4	6.1/4